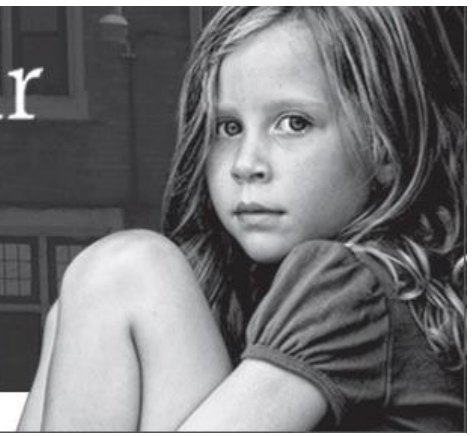


Help Us MOVE our MISSION

Our 85 year-old building is too costly to repair and too small to serve all the families who need help.

RESCUE MISSION OF THE MAHONING VALLEY



Naming Opportunities

MAIN:

Main Welcome Center Foyer	\$ 250,000
Conference Room	\$ 75,000
Biblical Counseling Waiting Room	\$ 50,000
Chaplain Office	\$ 20,000
Social Worker Office	\$ 20,000
Volunteer Coordinator Office	\$ 20,000
Main Washroom (2 available)	\$ 10,000 each
Chair in Chapel (79 available)	\$ 1,000 each
Chair in Education Center (50 available)	\$ 1,000 each

DINING:

Volunteer Entrance & Vestibule	\$ 25,000
Food Storage/Perishable Goods	\$ 25,000
Delivery	\$ 15,000
Cooler	\$ 7,500
Freezer	\$ 7,500
Chair in Dining Room (99 available)	\$ 1,000 each

ADMINISTRATION :

Development Suite	\$ 15,000
Chief Development Officer Office	\$ 10,000
Chief Finance Officer Office	\$ 10,000
Chief Operations Officer Office	\$ 10,000
Admin Kitchenette	\$ 10,000
Mission Ambassador Office	\$ 5,000
Development Associate Office	\$ 5,000
Finance Associate Office	\$ 5,000
HR Associate Office	\$ 5,000

MEN:

Men's 32 Bed Workforce Dorm A	\$ 125,000
Men's 32 Bed Transient Dorm B	\$ 125,000
Men's Services Dayroom	\$ 60,000
Men's Services Emergency Area	\$ 50,000
Academy Suites (10 available)	\$ 25,000 each
Academy Lounge	\$ 25,000
Men's Clothing Storage Room	\$ 25,000
Men's Laundry Room	\$ 20,000
Men's Dorm ADA Washroom	\$ 20,000
Men's Academy ADA Washroom	\$ 20,000
Director of Men's Services Office	\$ 15,000
Men's Utility Closet	\$ 5,000
Men's Bed (40 available)	\$ 2,000 each

FAMILY/SINGLE FEMALES:

Children's Play Area (Indoor & Outdoor)	\$ 250,000
Family Services Emergency Area	\$ 50,000
Family Services Suites (20 available)	\$ 25,000 each
Family Services Kitchenette Pantry	\$ 25,000
Family Services Storage Room	\$ 25,000
Family Services Laundry Room (2 available)	\$ 20,000
Family Services Large ADA Washroom	\$ 20,000
Private Family Washroom (6 available)	\$ 15,000 each
Director of Family Services Office	\$ 15,000
Family Services Utility Closet (2 available)	\$ 5,000
Family Services Bed (40 available)	\$ 2,000 each

*Pledges must be **payable over a maximum of 3 years**. For more information about the plan to "Move Our Mission", please contact the Mission's President/CEO, John Muckridge III at 330-744-5485 or visit www.MoveOurMission.org.*

